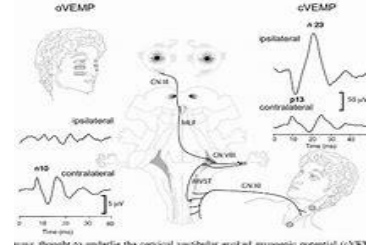


Havana Syndrome Testing Information



VGN: Videonystagmography

Additional Diagnosis: RNM, REM, & Ocular Imaging

- [Videonystagmography \(VNG\): MedlinePlus Medical Test](#)
- [Videonystagmography \(VNG\) | Texas Brain Institute \(TBI\)](#)
- [VNG Test \(Videonystagmography\): What It Is & Result Interpretation \(clevelandclinic.org\)](#)

VEMP: Vestibular Evoked Myogenic Potentials

Additional Diagnosis: inflammation Ear, vestibular nerve, migraines/headaches,

- [Vestibular Evoked Myogenic Potential - an overview | ScienceDirect Topics](#)
- [Vestibular evoked myogenic potentials: an overview - PMC \(nih.gov\)](#)

<https://www.dizziland.com>

Email: info@dizziland.com

Phone : (949) 274-8399

Dr. Michael Ellis Hoffer MD: University of Miami (Havana Syndrome)

Location: UHealth Ear Institute at the Clinical Research Building

I was told that he is no longer able to give the Havana Syndrome diagnosis anymore but is giving out DEW (Directed Energy Weapon(s)) diagnosis instead.

<https://substack.com/redirect/1a09cb30-59d8-4062-b650-a856c1320ff5?j=eyJ1IjoiMjNuY3h4In0.uP5spuhJkOdNRCifPHxjIVhUCa6YOskifyEpsQOpnW>

1) **Audiological Evaluation:**

- Hospital Fees: \$ 1,375
- Insurance Coverage: Tricare, Blue Cross Blue Shield are known.

2) **New Patient Appointment:**

- Total Fees: \$ 1,250
- Insurance Coverage: Tricare, Blue Cross Blue Shield are known.

Havana Syndrome Testing Information

Blood Tests:

- Vitamin-Shows the depletion and chemical reaction.
- Heavy Metals: Shows neurotransmitters.
- Glucose/blood Sugar: Sugar levels.
- Thyroid: Shows sugar, insulin, and attacks.
- Trace Element: Shows different reactions through minerals.
- Amino Acids
- Human Toxin-Shows pesticides, and human toxins within the body.
- Allergy: Shows different allergic reactions within the body.

Additional Tests:

- FMRI-proves your not mentally ill and no brain damage.
- EEG-Brain waves and attacks
- Brain Nerve-memory index, oxygen levels, heart palpations.
- Nerve Conduction-nerve damage, reflexes, medical condition association (exp: carpal tunnel,).